

# BATH SERVICES

Time\min and price\UAH

|   |                               |       |      |
|---|-------------------------------|-------|------|
| <b>BROOM MASSAGE IN A TRADITIONAL BATHHOUSE</b>   |                               | 7-10  | 870  |
| <b>BROOM MASSAGE IN SLAVYANSKA MOVNITSA</b>   |                               | 7-10  | 950  |
| <b>BROOM MASSAGE AND HONEY PEELING IN A TRADITIONAL BATHHOUSE</b>   |                               | 10-15 | 980  |
| <b>BROOM MASSAGE AND HONEY PEELING IN SLAVYANSKA MOVNITSA</b>   |                               | 10-15 | 1070 |
| <b>BROOM MASSAGE AND BEER PEELING IN A TRADITIONAL BATHHOUSE</b>  |                               | 10-20 | 980  |
| <b>BROOM MASSAGE AND BEER PEELING IN SLAVYANSKA MOVNITSA</b>  |                               | 10-20 | 1070 |
| <b>BATHING PROCEDURE "BERIZKA"</b>  | Slav'yanska movnytsya         | 10-15 | 1100 |
| <p>Massage with a birch broom and serving birch infusion on the stones. The value of the procedure is in the birch phytoncides, which deeply affect the alveoli of the lungs, thus contributing to their purification and improvement of their work.</p>                            |                               |       |      |
| <b>A SNOWY TOUCH<br/>MILK / HONEY PEELING</b>   | Slav'yanska movnytsya         | 20-30 | 1090 |
| <p>Massage with an oak broom, milk-salt (honey-salt) body peeling with mustard powder, contrast rubbing with snow in the snow room. The value of the procedure is the enhanced contrast effect due to additional heating with mustard and snow rubbing at subzero temperatures.</p> |                               |       |      |
| <b>COMPLEX TREATMENT</b>  | Slav'yanska movnytsya         | 60    | 2000 |
| <p>Horseradish peeling massage, broom massage and peeling (beer or honey), clay applications.</p>   |                               |       |      |
| <b>COMPLEX TREATMENT AND MASK</b>   | Slav'yanska movnytsya         | 60    | 2350 |
| <p>Horseradish peeling massage, broom massage and peeling (beer or honey), clay applications, fruit mask.</p>   |                               |       |      |
| <b>SPA-RITUAL "LUKOMORYE"</b>   | Traditional bath              | 60    | 2020 |
| <p>A complex bathing procedure, including honey and sugar peeling, oak bathing, contrast wrap of the body with milk ice during the bathing and nourishing the body with masks of natural ingredients.</p>   |                               |       |      |
| <b>BATHING IN 4 HANDS WITH HONEY/BEER</b>   | Slav'yanska movnytsya         | 25-30 | 1620 |
| <p>Broom bathing by two specialists at the same time. Rubbing with soda and salt, honey-salt/beer peeling, and crushed ice rubbing in the steam room.</p>   |                               |       |      |
| <b>ANCIENT EASTERN BATH</b>   | Orient. Ancient Eastern Baths | 30    | 1430 |
| <p>A complex procedure (peels) includes:</p>  |                               |       |      |
| - gentle body warming;  |                               | 60    | 2090 |
| - natural peeling (chocolate / honey / coffee);   |                               | 90    | 3000 |
| - full body lymphatic drainage massage.   |                               |       |      |

# BATH SERVICES

Time\min and price\UAH

## PEELING-MASSAGE IN THE HAMMAM + SPECIAL GLOVE

30 1430

Turkish soap massage combined with a peeling glove. A pleasant bath procedure, the use of which rejuvenates and improves the quality of the skin.

60 2090

## 4-HAND MASSAGE IN THE HAMMAM

40 3600

An exclusive ritual that combines a foam wrap, body peeling with natural olive soap, and a stunning 4-handed massage. The ritual is accompanied by burning candles and a pleasant fragrance, leaving an unforgettable feeling of inner celebration, complete relaxation, peace and harmony.

60 4000

## MASSAGE SOAP RELAX

Hamмам

60 2100

A cleansing with a special olive soap glove and a massage with Himalayan stones. The result is a cleansing of the skin, harmonization of the emotional state, lymphatic drainage and a stunning relaxing effect.

## ICE FLAME

Aurum. Pontic sauna

60 1100

Warming up in the Pontic sauna with a fan with aroma humidification of stones, cryo-massage with ice herbal infusion, canned vacuum massage with oil, massage through a cold sheet.

з обливаниям 1150

## SPANISH CLOAK

Aurum. Pontic sauna

60 990

Detox - a procedure aimed at flushing the body through the skin by alternating between warm and hot baths, salt cape, diaphoretic tea and steaming the feet in a saline solution.

-salt bath -Pontic bath

## COUPLE

Aurum. Pontic sauna

60 600

From 2 to 6 people. It is a gradual, soft, deep heating. It is carried out in 3 main phases.

## BREATH OF THE TIGER

Aurum. Pontic sauna

30-45 1040

Visiting a bath with a temperature of 80-90 degrees with rubbing with menthol infusion and peeling with menthol salt, which as a result gives a feeling of a pleasant chill on the skin. Pouring hot and cold water will charge you with strength and energy. The effect is vascular gymnastics, strengthening the immune system, removing toxins.

The Tsunami complex offers individual and personalized swimming training for children. Classes are designed to build confidence in the water, master proper technique, and support the child's balanced physical development, taking into account their age and skill level.

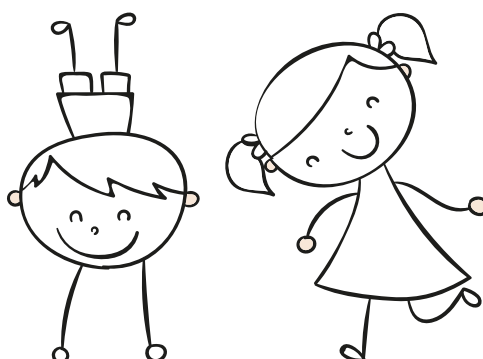
**SPORTS HEALTH SWIMMING** 4700

Swimming lessons with a coach. Styles: freestyle, butterfly, backstroke. 8 lessons, 8-week membership. Maximum number of children enrolled: four.  
60 min.

**GROUP TRAINING** 690

**INDIVIDUAL TRAINING** 800

**INDIVIDUAL TRAINING 12+** 950



|   |                   |                              |            |
|---|-------------------|------------------------------|------------|
| <p><b>CHILDREN'S POSTURE CORRECTION</b></p> <p>A massage procedure aimed at harmonizing muscle tone, improving posture, preventing scoliosis, flat feet and other problems of the musculoskeletal system. Modern, extremely safe and gentle methods of exposure are used.</p> | Aurum             | 30                           | 770        |
| <p><b>AIR HYDROMASSAGE WITH SEA SALT</b></p> <p>Dead Sea Salt with Magnesia. It has a complex effect on the body. Provides relaxation of muscles and nervous system, saturates tissues with minerals and oxygen, strengthens bone tissue, improves immunity.</p>              | Aquadelicia       | 30                           | 490        |
| <p><b>UNDERWATER HYDROMASSAGE</b></p> <p>Dead Sea salt with magnesia. It has a complex effect on the body. Provides relaxation of muscles and nervous system, saturates tissues with minerals and oxygen, strengthens bone tissue, increases immunity.</p>                    | Balneology        | 30                           | 560        |
| <p><b>BASIC MASSAGE</b></p> <p>Strengthens the musculoskeletal system of the child, develops correct posture, improves metabolism.</p>  | Bath Complex      | with oil 30<br>with cream 30 | 630<br>770 |
| <p><b>MASSAGE-PEELING ON HAMMAM</b></p> <p>Improves metabolism, cleanses the skin from the upper layer of keratinized epithelium.</p>   | Bath Complex      | 20                           | 770        |
| <p><b>THAI YOGA MASSAGE CHILDREN</b></p> <p>The procedure is done on the tatami. Consists of elements of yoga. Impact: assessment of the state and normalization of vitality. Prevention of disharmony of the body.</p>   | Zen-touch-shiatsu | 30                           | 630        |
| <p><b>CHILDREN'S FOOT MASSAGE IN THE SPA CINEMA</b></p> <p>Reflex foot massage in combination with watching artistic, scientific, animated films. Unique in its effectiveness SPA procedure, which gives anti-stress and relaxation effect</p>                                | SPA Cinema        | 30<br>60                     | 600<br>790 |
| <p><b>BATH OF BEAUTY AND HEALTH. PINIMENTOL</b></p> <p>Pinymenthol (menthol, camphor, eucalyptus) - stimulates the immune system, has an anti-cold effect.</p>  | Balneology        | 30                           | 500        |
| <p><b>BATH OF BEAUTY AND HEALTH. VALERIANA</b></p> <p>Has a relaxing and anti-stress effect.</p>  | Balneology        | 30                           | 450        |

# FACIAL AESTHETICS

Time\min and price\UAH

Aesthetic care using Babor, DMK (Danne), FAITH, La Sincere\*\*\* Face care using Babor, FAITH, La Sincere cosmetics

|   |                                     |  |           |
|---|-------------------------------------|--|-----------|
| <b>CARE FOR COMBINED AND OILY SKIN</b>  | Oriental cosmetology, Holiesthetics | 60                                       | 1000-2100 |
| <b>SKIN CARE WITH THE FIRST SIGNS OF AGING</b>  | Oriental cosmetology, Holiesthetics | 60                                       | 1300-2200 |
| <b>ANTICUPEROSIS CARE</b>   | Oriental cosmetology, Holiesthetics | 60                                       | 1300-2200 |
| <b>SKIN CARE WITH PIGMENTATION DISORDERS</b>  | Oriental cosmetology, Holiesthetics | 60                                       | 1600-3000 |
| <b>IMPERIAL CARE</b>  | Eastern cosmetology                 | 90                                       | 3300-3700 |
| The program is aimed at intensive restoration of the skin, slowing down the processes of biological aging. Result: a significant lifting, reduction of deep wrinkles, restoration of firmness and elasticity of tissues, improvement of skin blood circulation.   |                                     |  |           |
| <b>TIGHT VISAGE / REGENERATION CARE</b>   | Oriental cosmetology                | 70-80                                    | 3500-3800 |
| Lifting procedure including an active massage and care with the use of special cosmetic products (peeling, masks, serums). The procedure is aimed at eliminating double chin, modeling facial contours, raising the corners of the mouth and reducing nasolabial folds.   |                                     |  |           |
| <b>FAITH NIPS: NON-INJECTION SOLUTION OF PROBLEMS</b>   | Oriental cosmetology                | 60                                       | 1750      |
| Massage with care. A comprehensive approach to solving problems associated with age-related changes in the face. Facial contour is smoothed, skin nutrition improves, wrinkles are smoothed, swellings are eliminated and skin immunity is increased.   |                                     | 90                                       | 2580      |
|   |                                     | a lotion with "living collagen" is added |           |
| <b>"REINCARNATION" FACIAL CARE</b>  | Oriental cosmetology                | 120                                      | 3340      |
| Intensive care for tired, aging skin with wrinkles and signs of deformation of the contours. Due to the modeling facial massage and compression effects of the mask, a prolonged lifting effect is achieved. Recommended as a special occasion treatment or as a course of 5-8 treatments.  |                                     |  |           |
| <b>CARBOXYTHERAPY FACIAL «MEDIPLORER»</b>   | Facial aesthetics                   | 60                                       | 3650      |
| Carboxytherapy facial mediplorer is a non-invasive procedure. It saturates the skin with oxygen, restoring its cellular respiration, has a powerful antioxidant effect, lifting effect.   |                                     |  |           |
| <b>TAHITI</b>   | Holiesthetics                       | 90                                       | 3600      |
| 8 perfectly balanced steps - from gentle cleansing with exfoliation, facial massage, masks and deep-acting serums to an atmosphere of relaxation and pleasure. Intensive ingredients extracts of exotic plants - camellia, saffron, hibiscus, cassava, cucumber and mana oils, coconut, jojoba oils provide deep cleansing, moisturizing and elasticity of the skin of any age.           |                                     |  |           |
| <b>"BIRTH OF APHRODITE"</b>   | Holiesthetics                       | 120                                      | 3600      |
| Complex Lux care and real anti-stress therapy from JEAN D'ARCEL. An innovative concept of rejuvenating the skin of the face, neck, décolleté and hands in combination with a spa facial massage, author's massage techniques, including neurorelaxation massage with brushes. Immerse yourself in the atmosphere of relaxation, feel the tenderness of JEAN D' ARCEL aromas and textures. |                                     | Based on cosmetics JEAN D'ARCEL          |           |
| <b>PROCEDURE "PUSH UP THE SKIN" BY JEAN D'ARCEL</b>   | Holiesthetics                       | 120                                      | 3790      |
| An extraordinary treatment that will allow you to achieve a replenishing and regenerating effect, thanks to the powerful ingredients of red caviar extract, sea water and plant proteins, while an exclusive facial massage will relieve stress and restore the contour.  |                                     |  |           |
| <b>MICRODERMABRASION WITH SAPPHIRE POWDER</b>   | Holiesthetics                       | 30                                       | 1760      |
| A deep but gentle microdermabrasion with Jean D'Arsel using silk mousse, sapphire powder and AHA acids lotion. The result is a perfect relief of the skin without traumatization. It is used as a separate treatment or as a preparation before a treatment or massage.   |                                     |  |           |

\*\*\*Facial massage products are charged separately from the treatment

|  |               |     |      |
|--|---------------|-----|------|
| <b>JAPAN</b>   | Holiesthetics | 90  | 4290 |
| Exclusive seasonal facial care is an unparalleled Japanese beauty ritual. Extracts of chebula, fermented rice, shiitake mushroom, almond oil, and sesame oil provide comprehensive protection against environmental stressors, deeply nourish, protect, hydrate, and regenerate the skin. Two facial massages — a deep muscle massage and a massage with a natural rose quartz roller — deliver profound relaxation and effective tissue drainage. |               |     |      |
| <b>SOLUTION EXPERT</b>   | Holiesthetics | 120 | 6590 |
| Intelligent skincare that works at the cellular level, delivering powerful detoxification, instant lifting, and natural skin radiance. The layered application of five concentrated serums with peptides, ceramides, collagen, vitamin C, bakuchiol, and AHA acids, combined with two masks and a sculpting lifting facial massage, provides immediate results — deep hydration, visible glow, smoothness, and firmer, lifted skin.                |               |     |      |
| <b>RETINOL SKIN REGENERATION</b>   | Holiesthetics | 60  | 3900 |
| A treatment for timeless beauty. It intensely restores and smooths the skin, corrects fine lines, loss of firmness, uneven texture, and pigmentation, and visibly tightens pores. Pure encapsulated retinoids (retinol, retinaldehyde) and phyto-retinoids (bakuchiol, mastic) work gently yet effectively. An exclusive facial massage performed with a redwood stick enhances the results and delivers a powerful lymphatic drainage effect.     |               |     |      |
| <b>LIFTING CODE</b>  | Holiesthetics | 90  | 9390 |
| Skin rejuvenation with a WOW effect. Innovative Luxury facial care includes: a mask with 3 types of collagen at a 92% concentration, an adsorbing mask, serum boosters with elastin, high-molecular hyaluronic acid, glycoproteins from Arctic algae and bacteria, and a lifting complex with peptides. The exclusive Lift Up massage technique provides multi-vector lifting with a tightening and filling effect. Complimentary hand massage.    |               |     |      |

## THERAPEUTIC AND AESTHETIC CARE IN THE MEDICAL LINE COSMETICS DMK (DANNE)

|   |      |     |      |
|---|------|-----|------|
| <b>FOR OILY SKIN</b>  | East | 60  | 1100 |
| Cleansing treatment for all skin types.   |      |     |      |
| <b>FAST BEAUTY MASK   CARE</b>  | East | 60  | 1300 |
| Lifting express procedure, including acid-free peeling. The best effect is achieved by the next day.  |      |     |      |
| <b>ATRAUMATIC SKIN CLEANING   CARE</b>  | East | 90  | 1900 |
| Sebum thinning procedure, atraumatic pore cleansing and application of Enzymatic mask with plasmatic and lymphatic drainage action. Restoring the health of the skin of the face, neck and decollete.   |      |     |      |
| <b>FERMENTAL SKIN CLEANSING   CARE</b>  | East | 90  | 4500 |
| Skin cleansing procedure using a unique all-season peeling. The quality of the skin is improved, fine wrinkles are smoothed out. Lifting effect occurs due to application of DANNE enzymatic mask. The care is suitable for all skin types.   |      |     |      |
| <b>DEEP SKIN REVISION   CARE</b>  | East | 130 | 5500 |
| The procedure for detoxifying and cleansing the skin at the cellular level using the necessary products. Dermatox and enzyme peel Prozym DANNE. All metabolic processes are normalized, the skin is cleansed of decay products and toxins (especially after smoking), the skin is saturated with oxygen. Used for aging skin and hyperpigmentation. |      |     |      |
| <b>VASCULAR TRAINING   CARE</b>   | East | 90  | 2500 |
| Due to chemical heat, the procedure helps to reduce swelling and inflammation of reddened skin, relieves spasm of dilated vessels, reduces small vascular "asterisks", calms and improves skin condition, strengthens the dermal layer of the skin. The procedure is effective for rosacea and sensitive skin.                                      |      |     |      |

\*\*\*Facial massage products are charged separately from the treatment

|  |      |    |      |
|--|------|----|------|
| <b>MOST IMPROVING MUSCLE BANDING   CARE</b>  | East | 90 | 3100 |
| The treatment aims to strengthen and tighten all subcutaneous structures and elements. Makes the skin firmer, restores skin function. Gives a strong lifting effect. |      |    |      |

|   |      |     |      |
|---|------|-----|------|
| <b>ENZYME PEELING DANNE   CARE</b>  | East | 120 | 2800 |
| Gentle facial cleansing with DANNE enzyme peeling and a unique enzyme mask. |      |     |      |

## CHEMICAL PEELINGS ENERPEEL

**Aimed at solving aesthetic problems: photo and chrono aging, pigmentation, seborrhea, acne, scars and stretch marks. General facial rejuvenation and skin hydration**

Rejuvenation in minutes. No swelling, no hyperemia, no pain, quick recovery and long-lasting results

|   |  |    |          |
|---|--|----|----------|
| <b>MINDAL (MA)</b><br>Based on 40% almond acid                                      |  | 60 | 740-1440 |
| <b>JESSNER (JR)</b><br>Based on Jessner's (salicylic acid, lactic acid, resorcinol) |  | 60 | 820-1680 |
| <b>PYRUVIC ACID (PA)</b><br>Based on 50% pyruvic acid                               |  | 60 | 630-1180 |
| <b>SALICYLIC (SA)</b><br>Based on 30% pyruvic acid                                  |  | 60 | 640-1040 |
| <b>TRICHLOROACETIC ACID (TCA)</b><br>Based on 25% trichloroacetic acid              |  | 60 | 960-1830 |

## HARDWARE COSMETOLOGY AQUASURE H2

### **HYDROGEN PEELING AQUASURE H2** Oriental cosmetology

Hydrogen peeling-toning. Removal of free radicals from the skin, lowering the pH of the skin, moisturizing. Vacuum water-acid peeling. Removal of keratin residues, nutrition of the skin, improvement of blood circulation, increase in regenerative processes in the skin. Skin cleansing with salicylic and beta-hydroxy acids. Comedone removal, pore cleansing, demodex mite removal, T-zone skin normalization, acne control, skin sanitation.

|             |    |      |  |                      |    |      |  |                  |    |      |
|-------------|----|------|--|----------------------|----|------|--|------------------|----|------|
| <b>Face</b> | 60 | 2030 |  | <b>Face and neck</b> | 90 | 2480 |  | <b>Decollete</b> | 60 | 2030 |
|-------------|----|------|--|----------------------|----|------|--|------------------|----|------|

## HARDWARE COSMETOLOGY ICOONE LASER

Hardware technique Roboderm, which combines a new generation of microstimulation with a powerful laser and LED.  
Drainage, rejuvenation, cell stimulation, skin aging prevention, facial contouring, «double chin».

|  |                      |    |      |
|--|----------------------|----|------|
| <b>FACE MASSAGE ICOONE LASER</b>             | Oriental cosmetology | 20 | 830  |
| <b>FACE, NECK AND DECOLLETE ICOONE LASER</b> | Oriental cosmetology | 30 | 1050 |

\*\*\*Facial massage products are charged separately from the treatment



## FACE / HEAD MASSAGE

### FACE MASSAGE JIM

Holyesthetics

40

1250

Deep muscle work. Vigorous massage technique developed by Italian plastic surgeons and aimed at correction of wrinkles, facial oval and double chin. A visible lifting effect is achieved.

### FACE MASSAGE "GUASHA"

Holyesthetics

15

400

Lymphatic drainage technique with a jade scraper with a pronounced effect on improving facial contours

### SPA - FACIAL MASSAGE ORIENTAL

Oriental cosmetology

40

1090

Combination of different massage techniques according to individual program. Wrinkle prevention, removal of muscular tension, improvement of skin nutrition and its lymphatic drainage function, restoration of tissue elasticity and achieving a lifting effect.

50

1300

### RELAXING FACIAL MASSAGE

Oriental cosmetology

60

1240

Relieves psycho-emotional tension, gives a relaxing effect and visible wellness. Increases muscle tone and improves facial contours. Prevention and combating of the first signs of aging.

### STRETCHING FACE MASSAGE

Oriental cosmetology

40

1090

Rejuvenating facial massage technique, which eliminates the chronic tension of facial muscles. It improves the metabolism of tissues, has a lymphatic drainage effect. The skin becomes bright and shining. Its turgor and elasticity are improved.



# AESTHETICS OF THE FACE. ADVANCED DEVICE-BASED TREATMENT

## MECHANICAL CLEANING WITH CARE

Time\min and price\UAH

Oriental Cosmetology

60-90 1650-2100

The procedure is aimed at cleansing the pores, removing inflammatory elements and exfoliating the keratinized layer. Washing, cleansing, masks and concentrates.

## ULTRASONIC PEELING

Oriental Cosmetology

60 1300-1700

Exfoliation of keratinized epidermal cells, removal of sebum and impurities, deep cleansing and stimulation of cell renewal. Metabolism improves, complexion evens out and skin elasticity increases.

## MICROCURRENT THERAPY

Oriental Cosmetology

During the procedure, an active ionized substance is injected using microcurrents: the positive effect is created by the action of the preparation + the therapeutic action of the pulsed currents on the skin and muscle tissue. The result is a markedly beneficial effect: cell structure and functional activity are restored, wrinkles are reduced, signs of aging are eliminated, muscles are restored, and the appearance of the skin and face in general is improved.

|                                |    |         |
|--------------------------------|----|---------|
| <b>LIFTING</b> .....           | 40 | 650     |
| <b>TURBO LIFTING</b> .....     | 20 | 450     |
| <b>COSMETIC PRODUCTS</b> ..... |    | 250-400 |

## ICOONE LASER BODY CARE TREATMENTS

|   |      |    |      |
|---|------|----|------|
| <b>BODY MASSAGE ON THE ICOONE LASER</b> | East | 30 | 1170 |
|---|------|----|------|

The newest Roboderm method that combines a new generation of microstimulation with a powerful laser and LED. The technique is designed to effectively stimulate the skin in order to eliminate the defects of the figure. Thanks to ICOONE technology, the device replicates the manual massage, working on both parts of the body synchronously and effectively.

|                              |    |      |
|------------------------------|----|------|
| <b>+ 1 FOCUS AREA</b> .....  | 40 | 1240 |
| <b>+ 2 FOCUS AREAS</b> ..... | 50 | 1480 |
| <b>+ 3 FOCUS AREAS</b> ..... | 60 | 1710 |

|                             |     |
|-----------------------------|-----|
| <b>COSTUME RENTAL</b> ..... | 150 |
|-----------------------------|-----|

|                             |      |
|-----------------------------|------|
| <b>COSTUME BUYING</b> ..... | 1250 |
|-----------------------------|------|

|   |      |
|---|------|
| <b>BUYING A ICOONE COSTUME (BRAND NAME)</b> ..... | 2100 |
|---|------|

## BODY MOISTURIZING

Balneology

10

420

Moisturizing the body with Gerard's milk.

## VOLCANIC THERMO

Holiesthetics

Intensive wrapping with a warming effect of active ingredients in the composition for body shaping. Indications: cellulite, edema, overweight, decreased skin tone. A course of 8-15 treatments is recommended (according to indications).

without peeling 60

2770

with peeling 90

3750

## COFFEE SHAPE

Holiesthetics

An intensive procedure for cellulite correction, localized fat deposits on the thighs, buttocks, abdomen and general weight loss. Due to vacuum lipomassage with special silicone cans, microcirculation and drainage are enhanced, which improves the final result.

without peeling 120

2900

with peeling 150

3700



**MEZO-FIT WRAP**

Holiesthetics

Intensive treatment of cellulite, localized fat deposits and atonic skin. Multifunctional and high-tech complexes in the composition provide high results. Clinically proven effectiveness.

|                 |     |      |
|-----------------|-----|------|
| without peeling | 120 | 2800 |
| with peeling    | 90  | 3600 |

**ALGAE PLUS**

Holiesthetics

Algae Peeling and Modeling Wrap. For modeling contours, improving skin density, firmness and elasticity. Stem cells of rowanberry, Aachen thermal water, extracts of artichoke, silk, cherry, elderberry, tropical almond, milk peptides, Nori algae, vitamins A, C, E, precious shea butter, olive, almond and avocado oils improve turgor, model silhouette, protect skin from premature aging.

|                 |    |      |
|-----------------|----|------|
| without peeling | 60 | 2450 |
| with peeling    | 90 | 3380 |

**MINUS 9 CENTIMETERS**

Holiesthetics

Bandage anti-cellulite wrap. Correction of the manifestation of "orange peel", reduction of volumes up to 9 centimeters per course. Recommended course: 8-15 procedures.

|                 |    |      |
|-----------------|----|------|
| without peeling | 60 | 2050 |
| with peeling    | 90 | 3280 |

**CHOCOLATE PARADISE**

Thermo SPA

100% pure chocolate - moisturizes, saturates the skin with vitamins and minerals, fills the body with vivacity and relieves stress.

|    |      |
|----|------|
| 80 | 2400 |
|----|------|

**TEMPTATION**

Thermo SPA

The program consists of three stages: Cream peeling + relaxing chocolate massage + application of chocolate cream. The skin is saturated with vitamins and minerals. Effective anti-stress treatment.

|     |      |
|-----|------|
| 120 | 2950 |
|-----|------|



**WHISKEY**

Thermo SPA

Bandage wrapping, the method of wet whiskey swaddling is a complex solution to the problem of overweight and cellulite. The result of the course of procedures: weight loss, reduction of body volume, skin lifting.

|                 |     |      |
|-----------------|-----|------|
| without peeling | 90  | 2150 |
| with peeling    | 120 | 2400 |

**GERARD'S WHITE CLAY AND ESSENTIAL OIL PEPPER WRAP**

Thermo SPA

Anti-cellulite wrap with a significant drainage effect. Absolutely unique wrap that provides noticeable and immediate result after the first sessions. It cleanses the lymphatic system, eliminates excess fluid, activates microcirculation, which is necessary in the fight against cellulite of any type and excessive weight.

|                 |    |      |
|-----------------|----|------|
| without peeling | 60 | 2000 |
| with peeling    | 90 | 2450 |

**GERARD'S YOGURT AND COFFEE EXTRACT**

Thermo SPA

Exotic wrap based on natural yogurt with coffee extract. It has a moisturizing, softening, regenerating effect, with lipolytic and anti-edema effects.

|                 |    |      |
|-----------------|----|------|
| without peeling | 60 | 2130 |
| with peeling    | 90 | 2400 |

**GERARD'S YOGURT WITH STRAWBERRY AND GRAPE EXTRACT**

Thermo SPA

Exotic wrap based on natural yogurt with strawberry and grape extract. It has antioxidant, anti-inflammatory, cleansing, draining and stimulating microcirculation effects. After such care the skin will be soft and gentle and the mood will be light and carefree.

|                 |    |      |
|-----------------|----|------|
| without peeling | 60 | 2130 |
| with peeling    | 90 | 2400 |

**CELLO GEL WRAP (STYX)**

Thermo SPA

Stimulation of metabolism, reduction of the volume of problem areas of the body, lipolysis. Increases skin elasticity and tone. Provides Anti-age and Lifting effect.

|    |      |
|----|------|
| 90 | 2200 |
|----|------|

**VASEAWEED AND SEA MUD WRAP**

Thermo SPA

Strengthens and models the silhouette. Stimulates cellular metabolism, has a draining effect. Wrap with micronized seaweed and sea mud is a thalassotherapeutic treatment, which cleanses the body, saturates the skin with nutrients and activates the process of weight loss.

|                 |    |      |
|-----------------|----|------|
| without peeling | 60 | 2210 |
| with peeling    | 90 | 2850 |

**SEAWEED AND SEA MUD THERMOACTIVE WRAP**

Thermo SPA

The treatment has a thermo-activating, stimulating and anti-cellulite effect. Enhances microcirculation.

|                 |    |      |
|-----------------|----|------|
| without peeling | 60 | 2210 |
| with peeling    | 90 | 2850 |

**SCRUB WRAP WITH MINERAL SALT**

Thermo SPA

Anti-cellulite wrap with a strong draining effect. It removes excess fluid, activates microcirculation, which is necessary in the fight against cellulite of any type.

|    |      |
|----|------|
| 60 | 2150 |
|----|------|

**CREAM MOISTURIZING**

Thermo SPA

15 350

A gentle cream wrap helps to regenerate the skin, deep moisturizing and nourishing it. Excellent after sunbathing.

**SILK CARE**

Thermo SPA

100 2600

Peeling + wrapping + massage; Olive care with basil. Massage with olive jam, fluid, essential oils. Intensive toning scrubbing with finely ground basil leaves. The wrap deeply nourishes, moisturizes and softens the skin, as well as gives elasticity, improves elasticity and reduces volume.

**PEAT WRAP**

Thermo SPA

Peat is a substance rich in bioactive elements. The treatment helps to reduce weight, eliminates the appearance of cellulite, reduces swelling. It cleanses the body of toxins and helps to activate the metabolism.

without peeling 60 2750  
with peeling 90 3440

**THERMOACTIVE PEAT WRAP**

Thermo SPA

The treatment has a thermo-activating, stimulating and anti-cellulite effect. Enhances microcirculation.

without peeling 60 2600  
with peeling 90 3400

**INTENSIVE MOISTURIZING WRAP**

Thermo SPA

Intensively moisturizing body treatment with Kiwi fruit scrub and nourishing mask. Unsurpassed aromas, extracts of lotus flowers, orchid, white lily, aloe, almond oil and rice milk are allies in the fight against dry skin.

without peeling 60 1950  
with peeling 90 2900

**ANTI-CELLULITE WRAP WITH SEA SILT**

Thermo SPA

Treatment of infiltrative and fibrous cellulite. Extremely effective silt, myristemal algae cells, extracts of needleweed, focus, and escin help minimize the appearance of "orange peel" caused by fluid retention.

without peeling 60 2300  
with peeling 90 3550



## ALGAE PEELING

Holiesthetics

40

1320

Medium-intensity peeling based on 100% spirulina. It is rich in minerals, vitamins and trace elements.

## HONEY

Balneology

40

1050

Rejuvenation, removal of keratinized particles, skin regeneration.

## COFFEE

Balneology

40

1050

Cleanses, nourishes and tones the skin.

## KIWI

Holiesthetics

40

1320

Medium intensity body scrub based on sea salt and fruit acids, perfectly polishes and brightens the skin.

## ECO PEELING

Aquadelicia

40

1050

It cleanses the skin from dead cells, releases the body from toxins. Due to the content of amino acids, trace elements (phosphorus, potassium, magnesium, selenium, iodine, iron, calcium) and vitamins of group B, PP, C, E, K, it has a detox effect and powerful moisturizing. Saccharides contained in oats have a softening effect on the skin and prevent dehydration.

## BODY SCRUB WITH SEA SALT (OIL)

Holiesthetics

40

2200

A medium-intensity body scrub based on sea salt and fruit acids, perfectly polishes and brightens the skin.

## BODY SCRUB WITH SEA SALT

Holiesthetics

40

1750

A medium-intensity scrub with a refined gel texture with Dead Sea salt and centella extract. The result is intensely moisturized and soft skin.

## LAVENDER PEELING

Aquadelicia

40

1050

Gentle skin renewal and deep relaxation. Smoothness, tenderness and aromatherapy in one treatment.

## COCONUT PEELING

Aquadelicia

40

1050

The scrub gently cleanses, moisturizes and nourishes the skin, leaving it smooth and radiant. Suitable for dry and sensitive skin.



## PEPPERMINT PEELING

Aquadelicia

40

1050

The mint scrub refreshes, tones and perfectly cleanses the skin, leaving it feeling cool. It is suitable for all skin types, especially oily and combination skin.

## CHOCOLATE PEELING "CROWN"

Balneology

40

1050

Tones and nourishes the skin, leaving it silky and elastic, leaving an aftertaste - a pleasant skin smell and a great mood.

## SAUVIGNON PEELING

Thermo SPA

40

1120

The polyphenols of grape contained in the product have a powerful antioxidant effect, preventing the skin from aging.

## BASILIC

Thermo SPA

40

1050

Based on Gerards olive oil and basil leaves.

## EAST

Thermo SPA

40

1050

Honey peeling with the addition of spices. Improves microcirculation and tones the skin. Used in anti-cellulite programs.

## SCRUB WITH OLIGOELEMENTS

Thermo SPA

40

1200

The scrub is based on a creamy texture, has a moisturizing and restoring elasticity, stimulates the natural production of collagen.

## AROMATIC SALT SCRUB PEPER

Thermo SPA

40

1320

Contains Dead Sea salt. Vegetable oils of almond and tiare flower. Essential oils of pepper, lavender, sweet orange and rosemary.

## BODY PEELING "COFFEE SHAPE"

Holiesthetics

40

1750

Medium intensity scrub based on Silverskin coffee, sugar cane crystals, sea salt, rice, sweet almond oil. Stimulates microcirculation, promotes the removal of excess fluid, gives the skin elasticity and radiance.

## HONEY MOON

Thermo SPA

40

1200

Peeling for all skin types. Removes keratinized epidermis, stimulates cell renewal, increases skin tone. Apricot kernels provide gentle renewal, making the skin perfectly soft, moisturized, velvety. The peel has a fruity aroma of ylang-ylang.



# BODY AESTHETICS. BATH

## HEALTH AND BEAUTY BATHS

Time\min and price\UAH

|   |                          |    |      |
|---|--------------------------|----|------|
| <b>CLEOPATRA BATH</b>   | Aquadelicia \ Balneology | 90 | 2690 |
| <p>Royal body care. Combination of honey peeling and high pressure hydro-massage in a milk bath. It revitalizes the skin, gently cleanses, nourishes, tones and deeply moisturizes, keeping the effect for a long time.</p>   |                          |    |      |
| <b>CHOCOLATE EUPHORIA</b>   | Бальнеологія             | 90 | 3000 |
| <p>The Spa procedure begins with a chocolate exfoliation. This is followed by a warm cinnamon-scented chocolate bath, a hydro-massage and moisturizing of the skin. This treatment reduces the appearance of cellulite, increases skin elasticity, makes the skin fresher and more velvety, eliminates fatigue and stress.</p>  |                          |    |      |
| <b>LAVENDER RELAXATION</b>  | Aquadelicia              | 90 | 2650 |
| <p>Lavender relaxation<br/>The procedure consists of three stages: body scrub, lavender hydromassage and moisturizing. Lavender scrub perfectly cleanses the skin, has an antiseptic and soothing effect, lavender hydro-massage helps reduce volumes, improves skin turgor, reduces swelling, lavender has antibacterial properties and has a good effect on the nervous system. And the final stage is moisturizing the</p> |                          |    |      |
| <b>MINT RELAXATION</b>  | Акваделіція              | 90 | 2650 |
| <p>The procedure consists of three stages: body scrub, eucalyptus hydromassage and moisturizing. Mint scrub perfectly refreshes, tones and cleanses the skin, eucalyptus hydromassage helps to reduce volumes, improve skin turgor, reduce swelling, eucalyptus has anti-inflammatory properties and has a very good effect on breathing. And the final stage is moisturizing the skin.</p>                                   |                          |    |      |
| <b>WINE BATH</b>  | Balneology               | 45 | 2850 |
| <p>Wine therapy is a real anti-aging medicine. It calms the nervous system, stimulates blood circulation, improves skin turgor, tones and saturates it with moisture. Wine is the main ingredient that saturates the body with vitamins and minerals, makes the skin incredibly smooth and elastic.</p>   |                          |    |      |
| <b>CHAMPAGNE BATH</b>   | Balneology               | 40 | 3600 |
| <p>Removes toxins, relieves stress, stimulates blood circulation, saturating the skin with oxygen.</p>  |                          |    |      |
| <b>BEAUTY AND HEALTH BATH. PINIMENTHOL</b>  | Aquadelicia \ Balneology | 20 | 850  |
| <p>Pinimenthol (menthol, camphor, eucalyptus) - stimulates the immune system, has an anti-cold effect.</p>  |                          |    |      |
| <b>BEAUTY AND HEALTH BATH. VALERIAN</b>   | Aquadelicia \ Balneology | 20 | 730  |
| <p>Has a relaxing and anti-stress effect.</p>   |                          |    |      |
| <b>SEA BREEZE</b>   | Aquadelicia \ Balneology | 40 | 730  |
| <p>A bath with the addition of liquid algae. Active substances, penetrating the epidermal barrier, saturate the skin with minerals and vitamins, deeply moisturize and nourish it, activate fat metabolism, and normalize the water-salt balance.</p>   |                          |    |      |
| <b>EPSOM SALT BATH</b>  | Aquadelicia \ Balneology | 20 | 730  |
| <p>Helps relieve tension, muscle pain, improve sleep and overall well-being, and is also useful for skin care.</p>  |                          |    |      |



**BATH WITH ROSEMARY** Aquadelicia \ Balneology 20 730  
 Has a tonic effect on the nervous system.

**DERMATOLOGICAL BATH** Aquadelicia \ Balneology 20 730  
 For problem skin, moisturizing effect.

**CHESTNUT BATH** Aquadelicia \ Balneology 20 730  
 Used to relieve swelling and tired legs.

**LAVENDER BATH** Aquadelicia \ Balneology 20 730  
 Has a calming and harmonizing effect on overexertion and nervous overload.

**LEMON BALM BATH** Aquadelicia \ Balneology 20 730  
 Helps relax the muscles and nervous system, provides a mild sedative effect.

**BEAUTY AND HEALTH BATH: MUSCLES AND JOINTS** Aquadelicia \ Balneology 20 730  
 Recommended for muscle stretching, treatment and therapy of diseases of the musculoskeletal system and peripheral nervous system.

**EUCALYPTUS BATH** Aquadelicia \ Balneology 20 730  
 It has a positive effect on the respiratory tract and nervous system.

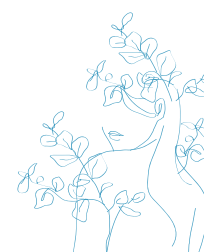
**BISCHOFITE BATH** Aquadelicia \ Balneology 20 730  
 Baths with the concentrate have anti-inflammatory, analgesic, and anti-edema effects, relieve stress, reduce anxiety, and increased nervous excitability, normalize blood pressure, improve sleep, relieve cramps and muscle spasms, and provide a healthy appearance and tone to the skin.

**MAGNESIUM BATH** Aquadelicia 20 600

- relieving muscle tension
- strengthening the walls of blood vessels
- normalizing the digestive process
- boost immunity
- cleanse pores
- reduce swelling
- stress relief
- fluid removal
- improved blood circulation

BATH CONCENTRATES (ADDITION TO HYDROMASSAGE)

**BATH CONCENTRATE:** penimintol, rosemary, lavender, lemon balm, eucalyptus, 450-480  
 Dermatological 690  
 Valerianna 630  
 Bischofite 450-560



# MASSAGES

Time\min and price\UAH

|   |  |      |
|---|--|------|
| <b>NUTRITIONIST CONSULTATION</b>        |  | 1320 |
| <b>RECONSULTATION OF A NUTRITIONIST</b> |  | 1100 |
| <b>DIET AND DAILY REGIMEN</b>           |  | 1650 |

## SBA (SYSTEM BODY ANALYSIS)

|  |  |     |
|--|--|-----|
| A system for testing the state of the body's energy channels. The program is based on the doctor's consultation and diagnosis. |  | 700 |
|--|--|-----|

## RELAXING BODY PART MASSAGE

|                          |    |     |
|--------------------------|----|-----|
| <b>LEGS</b> .....        | 30 | 630 |
| <b>HEAD</b> .....        | 30 | 630 |
| <b>COLLAR ZONE</b> ..... | 30 | 630 |
| <b>HANDS</b> .....       | 30 | 630 |

## SUNDARY NEEM AND COCONUT OIL SCALP MASSAGE

Balneology

30 850

Uses oils of rice bran, neem, centella asiatica, apricot kernel, rose oil, coconut oil, triphala extract. It has an intensive regenerating effect, stimulates hair growth and strengthens the hair roots and soothes the sensitive scalp.

## PRESSOTHERAPY (MACHINE LYMPH DRAINAGE MASSAGE)

Physiotherapy

30 550  
45 670

A method of rhythmic stimulation of muscles and tissues in a specific sequence to induce natural lymphatic drainage and reduce fluid and toxin stagnation. It improves metabolism (metabolism) of internal organs and soft tissues, increases functional capabilities of body systems.

## HORIZONTAL EXTENSION OF THE SPINE

Physiotherapy

20 360

Preliminary doctor's consultation. The procedure is aimed at improving the function of the spine and the musculoskeletal system as a whole. Namely: reduction of the load on the intervertebral discs, prevention and treatment of osteochondrosis, back and joint pain. Performed both independently and in combination with manual therapy.

## REIKI MASAGE

60 1270  
90 1590

A session in which soft hand movements are added to the therapeutic energy flow. As a result, you will feel relaxed and energized.

## ACUPUNCTURE

40 720  
60 960  
90 1450

One of the traditional Chinese techniques involving the insertion of thin needles into biologically active points of the human body. Needle placement eliminates painful conditions.

# SOUND THERAPY

Time\min and price\UAH

## SOUND MEDITATION

30 720  
45 970  
60 1200  
90 1500

A relaxing treatment that uses the vibrations and sounds of Tibetan bowls and other instruments to harmonize the body and mind. It helps to relieve stress, improve emotional state and energy balance.

# MASSAGES

Time\min and price\UAH

## BALINESE MASSAGE

60 1700

It is aimed at deep relaxation and body healing. The technique combines a deep effect on the musculoskeletal system with acupressure. It relieves pain, makes the skin tighter, and improves the mobility of the spine and joints.

## ENERGY MASSAGE

60 1450

Restores harmony of spiritual and psychological state of a person, has a positive effect on the human body. It is important that it is performed by a master of the opposite sex. Gives a feeling of inner calmness, harmony, life balance.

## ELECTROTHERAPY

Physiotherapy

10 220

The therapy is carried out using a multifunctional physiotherapy apparatus for electrotherapy ZIMMER (Germany): more than 100 preset treatment and rehabilitation programs, modern software, safety and painlessness. Indications: treatment of back pain, neuralgia, radicular pain. Relaxation of spasmodic muscles and ligaments, the elimination of "crepitation", the stimulation of metabolic processes in tissues, with osteochondrosis, arthrosis. Increase the tone of the venous vessels, strengthening and harmonization of muscle tone.

## LITE MASSAGE

Orient, Aurum

Gentle, light, superficial massage based on the classical massage. During the massage the superficial layer of the muscles is worked through, using the method of smooth sliding.

oil 40 830  
cream 40 1040

## ACCENT - SPORTS MASSAGE

Aurum

This is a highly qualified and highly specific massage technique, the aim of which is to relieve muscle tension after physical stress. Therefore, it increases efficiency and speeds up muscle recovery.

oil 30 1020  
40 1210  
60 1590  
90 2200  
cream 30 1210  
40 1450  
60 1780  
90 2340

## ORIENTAL FOOT MASSAGE

Orient, Aurum

30 770

Reflexive foot massage. Effects on the biologically active points, joints and ligaments of the feet. Improves blood supply and elasticity of tissues. The treatment has a strong anti-stress effect.

## ANTI-CELLULITE MASSAGE

Orient, Aurum

Deep intensive massage technique, with emphasis on the thighs, abdomen, arms. The aim is to reduce cellulite deposits, reduction of subcutaneous fat. As a result, a correction of the body shape.

oil 60 1700  
cream 60 1910

## FITNESS MASSAGE

Orient

It is recommended to reduce local fat deposits and signs of cellulite, stimulate muscle tone and improve general well-being. It combines lymphatic drainage, classical massage, techniques of impact on subcutaneous fatty tissue and fitness exercises.

60 1700  
90 2350

## 4-HAND MASSAGE IN THE HAMMAM

Hamмам

An exclusive ritual that combines a foam wrap, body peeling with natural olive soap, an amazing 4-handed massage. The procedure is performed by two specialists, in the warm and cozy space of the hammam. The ritual is accompanied by burning candles and a pleasant aroma, leaving an unforgettable feeling of inner joy, relaxation, peace and harmony.

40 3600  
60 4000

## MASSAGES

Time\min and price\UAH

### SOAP RELAX MASSAGE

Hamмам

60 2100

Cleansing with a special glove and olive soap and stone massage with Himalayan stones. The result is a cleansing of the skin, harmonization of the emotional state, lymphatic drainage and a stunning relaxing effect.

### PEELING MASSAGE IN THE HAMMAM

Hamмам

30 1430  
60 2090

Turkish soap massage, combined with peeling mitts. A pleasant bath procedure, the use of which rejuvenates and improves the quality of the skin.

### SPA MASSAGE FOR PREGNANT WOMEN

Orient, Aurum

40 1300  
60 1810

Antistress effect, elimination of back pain, normalization of tense muscles tone, improvement of lymph flow and blood circulation.

### HIGH PRESSURE HYDROMASSAGE

Balneology

40 1200  
60 1400

Improves blood circulation and metabolism, evens out skin texture, has a relaxing effect

### ADDITIVE: SALT FROM THE DEAD SEA

Balneology

260

Baths with Dead Sea salt relieve pain and muscle cramps, have beneficial effects on health and appearance. Promotes complete relaxation of the whole body

### ADDITIVE: EPSOM SALTS

Balneology

380

Bitter salt, magnesium sulfate is unique in its composition, an irreplaceable tool for health, youth and beauty

### SOFT TOUCH RELAX

Balneology

oil 60 1360  
90 1770  
cream 60 1620  
90 2010

Relaxing massage. It relieves muscle tension, improves blood and lymphatic circulation, has a positive effect on the nervous system.

### CHOCOLATE

Thermo SPA

60 1550

It improves skin elasticity, makes it fresh and velvety, eliminates fatigue and stress.

### AROMOSAICA

Thermo SPA

60 1350  
90 1770

Relaxing massage with essential oils, elements of Thai and acupressure point massage. Allows you to relieve stress, restore strength, improve emotional state.



# MASSAGES

Time\min and price\UAH

## MODELING LYMPH DRAINAGE

Aurum

It is performed with the method of gentle smooth pressure and sliding along the lymph flow line on the body. The aim is to reduce swelling. As a result: improvement of immunity, treatment of lymph flow disorders, elimination of excessive intercellular fluid, treatment and prevention of varicose veins.

|       |    |      |
|-------|----|------|
| oil   | 60 | 1590 |
|       | 90 | 2200 |
| cream | 60 | 1780 |
|       | 90 | 2350 |

## RENAISSANCE (COMBINED MASSAGE)

Aurum, East

A deep massage technique based on the techniques of classical massage, Japanese massage as well as soft tissue manual therapy. Aimed at combating acute and chronic pathologies of the musculoskeletal system. A full body massage is performed with emphasis on significant areas, areas of tension.

|       |    |      |
|-------|----|------|
| oil   | 30 | 1040 |
|       | 40 | 1270 |
|       | 60 | 1700 |
|       | 90 | 2350 |
| cream | 30 | 1270 |
|       | 40 | 1470 |
|       | 60 | 1910 |
|       | 90 | 2500 |

## KINESIO MASSAGE (MUSCLE TESTING, CHIROPRACTIC CORRECTION)

Aurum

Procedure based on the method of applied kinesiology. Identification of a significant region followed by correction of functional changes in the muscular system.

|    |      |
|----|------|
| 60 | 1810 |
| 90 | 2460 |

## KINESIO MASSAGE WITH TAPING

Aurum

Procedure based on the method of applied kinesiology. Identification of a significant region with subsequent correction of functional changes in the muscular system. Plus taping as prolongation of the therapeutic effect.

The procedure includes massage, diagnosis and taping.

|    |      |
|----|------|
| 70 | 2140 |
|----|------|

## MANUAL CORRECTION

Aurum

A procedure aimed at eliminating pain in the back, correcting muscular imbalances and posture. Increases the body's resistance to stress and strain.

|       |    |      |
|-------|----|------|
| oil   | 30 | 1080 |
|       | 40 | 1320 |
|       | 60 | 1760 |
|       | 90 | 2350 |
| cream | 30 | 1430 |
|       | 60 | 1920 |
|       | 90 | 2580 |

## HIPPOCRATES BATH

Aurum

The treatment improves the function of the spine and musculoskeletal system. Massage-articular gymnastics combined with passive gymnastics and traction.

Prevention of osteochondrosis and other effects of a sedentary lifestyle.

|    |      |
|----|------|
| 40 | 1540 |
| 60 | 2030 |

## BODY KINESIOTAPING "ARES"

Aurum

A modern method of treating the musculoskeletal system with the help of tapes - a special elastic bandage.

550

## KINESIOTAPING FACE

Aurum

A modern method of affecting the musculoskeletal system with the help of tapes - a special elastic bandage.

770



# MASSAGES

Time\min and price\UAH

## ZEN TACH SHIATSU

East. Zen Touch Shiatsu Cabinet

An ancient Chinese technique based on gradually increasing pressure on muscles and biologically active points. Causes a balance between tense and relaxed muscles. Harmonizes the psycho-emotional state.

30 1040  
60 1700  
90 2350

## TRANSVERSAL DEEP MASSAGE

East. Zen Touch Shiatsu Cabinet

A general massage procedure. During its performance transversal massage techniques prevail. The deep muscle layers are worked through optimally. It is an intensive and painful treatment with great effect.

30 1040  
60 1700  
90 2350

## NEUROMUSCULAR REDUCTION

East. Zen Touch Shiatsu Cabinet

General massage. The basis of the technique is a combination of stretching and kneading techniques, during which muscle recovery and improvement of musculoskeletal function takes place.

60 1700  
90 2350

## SPANISH MASSAGE

Orient

A massage technique based on Enrique Garcia's methodology. Smooth, gentle movements relieve emotional tension, irritability and chronic fatigue.

oil 60 1360  
90 1860  
cream 60 1620  
90 2000

## THAI MASSAGE

East. Zen Touch Shiatsu Cabinet

The ancient art of Thai massage has a calming effect on the nervous system and normalization of vitality.

60 1700  
90 2350

## YUMEIHO

East. Zen Touch Shiatsu Cabinet

A unique Japanese technique. Combines techniques of Oriental manual correction and influence on biologically active points. Activates the flow of vital forces. Gives lightness to movements.

40 1460  
60 1700  
90 2350

## CHAKRA STONE MASSAGE

East. Stone therapy

In general, the procedure has an anti-stress and adaptive effect. General massage with the use of special stones and hand massage. Basalt stones act on the Chakra area, which is the area where the energy is concentrated.

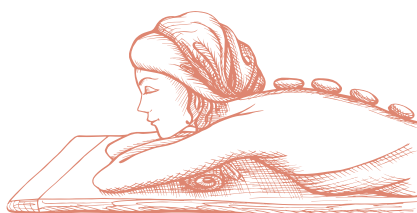
45 1540  
60 1850  
90 2480

## STONE ENERGY

East. Zen Touch Shiatsu Cabinet

Stone therapy procedure. The massage uses semi-precious stones, which are individually selected for each client. Each mineral has a special energy potential and has a harmonizing.

90 2480



## MASSAGES

Time\min and price\UAH

### FIRE AND ICE

East. Zen Touch Shiatsu Cabinet

90 2550

Stone - therapy procedure. With the use of cold and hot stones. The massage has a toning effect.

### SABAI STONE MASSAGE

East. Zen Touch Shiatsu Cabinet

70 2050

A therapeutic massage that eliminates stress, relieves pain and exhaustion, and optimizes lymph circulation.

### BAMBOO LYMPH DRAINAGE MASSAGE

East. Zen Touch Shiatsu Cabinet

45 1320

A powerful technique with a strong biostimulating effect.

60 1780

Action: remodeling the silhouette, anti-cellulite and drainage effect, elimination of krepatura after physical exertion, restoration of balance on the physical and energetic level.

### CHINESE MASSAGE GUA SHA

Massage area

40 1370

A unique ancient method of therapeutic massage, Using a special scraper massage along the lines and points of the body. It has a revitalizing effect on the whole body.

60 1770

### CHINESE MASSAGE GUA SHA ANTI-CELLULITE

Massage area

30 1030

It is a kind of classical massage gua sha with the accent on the problem zones: hips, abdomen, arms. It provides improvement of tissue metabolism, optimization of lymph flow and microcirculation.

### CHINESE MASSAGE GUA SHA THERAPEUTIC

Massage area

30 1370

Complex procedure. At the first visit: diagnostics + massage. The functional state of the body is defined, the degree of overloading of drainage systems (lymphatic, urinary, gastrointestinal, etc.), the relevant areas for exposure. After the diagnostics a session of Guasha therapy is made, working on the back, feet and legs, upper shoulder girdle. A course of procedures is recommended.

60 1770

90 2340

### FIRE DRAGON

Massage area

60 2010

Therapeutic herbal infusions, soft towels, oriental music and fire are the components of this revitalizing massage. Improves blood and lymph circulation, activates metabolism, removes toxins.

90 2500

### CHI-SUE-TONG

Massage area

60 1910

Chinese massage with vacuum bands.

Lymphatic drainage effect, cleansing and harmonization of energy channels, improvement of microcirculation, elimination of muscle tension and pain.

90 2650

## MASSAGES

Time\min and price\UAH

### HARMONY

Tatami Zone

60 1360

A gentle, anti-stress, restorative massage technique that aims to create a sense of inner peace, harmony, lightness, and to relieve feelings of brokenness and fatigue. During the massage we pay special attention to the areas of emotional accumulation - feet, hands, head and neck.

90 1770

### WAVE-MASSAGE

Orient. Stone Therapy Cabinet

40 1230

"Soul Massage. Rhythmic hand movements, special rocking, application of special essential compositions. Relieves restriction of joint movements, removes muscle tension.

60 1700

90 2370

### TONIC FOOT MASSAGE IN THE SPA-CINEMA

SPA-Cinema

30 1050

Relieving chronic fatigue and deep relaxation. While watching a film and listening to music the reflexive foot massage is performed. The action is carried out by Eastern technique with special massage sticks.

60 1180

### RELAXING FOOT MASSAGE IN THE SPA-CINEMA

SPA-Cinema

30 820

Relaxing, gentle, light massage combined with movie and music

60 1030

### TOUCH OF MORPHEUS (FOOT AND HAND MASSAGE)

SPA-Cinema

90 1540

Relaxing Foot and hand massage in the SPA-cinema

### 7TH HEAVEN

SPA-Cinema

40 1350

Foot and hand massage in the SPA-cinema

### THE TOUCH OF MORPHEUS

SPA-Cinema

90 1850

Foot and hand toning massage in the spa cinema, using oriental techniques with special massage sticks.

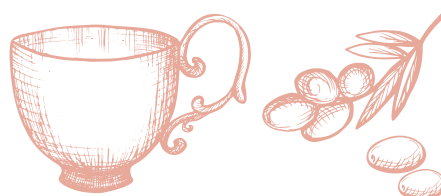
### EGYPTIAN BODY AND HEAD MASSAGE

Aquadelicia

60 1700

Combining several techniques at the same time, this is a deep tissue and at the same time soft massage. Sedative effect. Lymphatic drainage processes are launched and blood circulation improves. Deep tissue work with muscles and fascia. Anti-cellulite effect.

90 2350



## 4 HANDS AYURVEDIC HEAD AND FOOT MASSAGE

Ayurveda

25

1320

## ABHYANGA - CLASSIC AYURVEDIC MASSAGE

Ayurveda

30

1340

Gentle full body massage with warm oils, performed by two specialists synchronously. Relieves stress, muscle pain in the body. Warm oils improve joint and muscle health.

60

2000

## SHIRODHARA

Ayurveda

1 specialist

45

1320

Relaxes the central nervous system and normalizes blood pressure. It is indicated for insomnia, stress, headaches, skin diseases, prevents hair loss.

2 specialists,  
4 Hands massage

45

1590

## UDWARTAN (DRY)

Ayurveda

1 specialist

40

1710

This is a pleasant massage where intense movements of the hands are used to rub a medicinal powder with various additives into the skin of the body. Thanks to the combination of oils and herbs, the structure of the skin is significantly improved, making it soft and silky. Due to the action of the peeling, the skin is saturated with all necessary microelements and acquires a healthy shiny matt color.

2 specialists,  
4 Hands massage

45

2010

## 4 HAND MASSAGE WITH TRIPHALA

Ayurveda

1 specialist

60

1540

Udvardan massage facilitates the breakdown and excretion of subcutaneous fat. The technique is effective in fighting cellulite, overweight, loose skin and muscles after childbirth or weight loss. The massage effectively stimulates and tones muscles, recovers metabolism in the body and enhances microcirculation of blood and lymph. Under the influence of massage movements in conjunction with the action of medicinal herbs increases blood circulation, cleanses the skin, eliminates toxins from the body.

2 specialists,  
4 Hands massage

60

2100



**AMRITA PEELING MASSAGE 4 HANDS**

Ayurveda

30 1250

Cleanses the skin easily and effectively, making it soft and pleasant.

**FLORAL GODDESS PEELING**

Ayurveda

1 фахівець

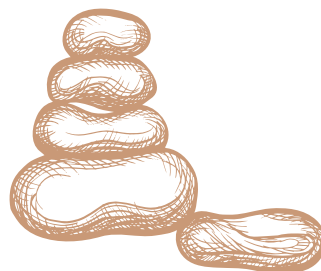
A unique massage technique, crushed flowers of linden, marigold and chamomile gently exfoliate the skin immersing it in an atmosphere of relaxation and aromatherapy. Coconut oil with rose petal powder will nourish and moisturize your skin. In ancient India this treatment was part of the bride's wedding preparations.

40 1180

Effect: skin cleansing, nourishing, moisturizing, aromatherapy. It soothes irritation, calms the skin and prevents aging.

2 фахівця  
масаж у 4 руки

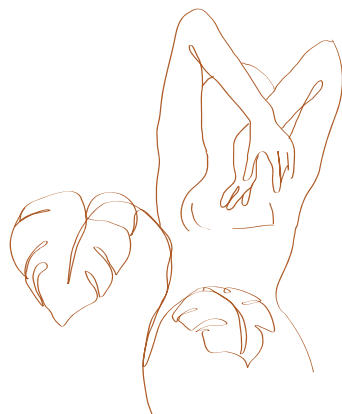
40 1330



# WAXING

Price\UAH

|                       |                     |      |
|-----------------------|---------------------|------|
| UPPER LIP             | Eastern cosmetology | 200  |
| CHIN                  | Eastern cosmetology | 200  |
| SHOULDER              | Eastern cosmetology | 340  |
| FOREARM               | Eastern cosmetology | 240  |
| BIKINI ZONE FOR WOMEN | Eastern cosmetology | 650  |
| DEEP BIKINI           | Eastern cosmetology | 970  |
| BIKINI ZONE FOR MEN   | Eastern cosmetology | 1500 |
| ARMPITS               | Eastern cosmetology | 300  |
| THIGHS STAGE 1        | Eastern cosmetology | 520  |
| THIGHS STAGE 2        | Eastern cosmetology | 670  |
| LOWER LEGS STAGE 1    | Eastern cosmetology | 520  |
| LOWER LEGS STAGE 2    | Eastern cosmetology | 670  |
| EARS / NOSES          | Eastern cosmetology | 200  |
| BACK                  | Eastern cosmetology | 570  |



# HAIRDRESSING SALON

Price\UAH

|                                  |              |         |
|----------------------------------|--------------|---------|
| <b>HEADWASHING</b>               | Hairdressers | 130     |
| <b>HAIRCUT FOR WOMEN</b>         | Hairdressers | 580-800 |
| <b>HAIRCUT FOR MEN</b>           | Hairdressers | 660     |
| <b>HAIRCUT FOR CHILDREN</b>      | Hairdressers | 460     |
| <b>FRINGE / BANGS</b>            | Hairdressers | 130     |
| <b>HAIRCUT</b>                   | Hairdressers | 220     |
| <b>MOUSTACHE HAIRCUT</b>         | Hairdressers | 120     |
| <b>BEARD HAIRCUT</b>             | Hairdressers | 220     |
| <b>HAIRCUT UNDER THE MACHINE</b> | Hairdressers | 530     |
| <b>EVENING STYLING</b>           | Hairdressers | 430-610 |
| <b>EVENING HAIRSTYLE</b>         | Hairdressers | 860     |

## HAIR COLORING AND MELTING

Hair dyeing with premium Davines Mask products. Natural uniform result, long-lasting shine and color, saturated bright colors and perfect coverage of gray hair. The dye contains milk proteins and conditioning components that seal and moisturize the hair cuticle. Delicate natural surfactants ensure the removal of the remaining pigments without affecting the result of hair coloring.

|                   |              |          |
|-------------------|--------------|----------|
| <b>HIGHLIGHTS</b> | Hairdressers | 930-3450 |
| <b>TONING</b>     | Hairdressers | 700      |
| <b>COLORING</b>   | Hairdressers | 700-900  |

\* Price does not include cosmetics.

\*Cosmetics are chosen individually according to the condition and length of the hair.

## SPA TREATMENTS BASED ON DAVINES PRODUCTS

|   |              |          |
|---|--------------|----------|
| <b>SPA-CARE NOURISHING (RESTORING MIRACLE)</b><br>Nourishes, moisturizes, heals and improves the texture of the hair. | Hairdressers | 860-1260 |
| <b>SPA CARE REPLUMPING</b><br>Thickening, giving elasticity to the hair.  | Hairdressers | 610      |
| <b>HEAD MASSAGE</b>   | Hairdressers | 500      |

## EYELASHES AND EYEBROWS

|                           |              |     |
|---------------------------|--------------|-----|
| <b>EYEBROW COLORING</b>   | Hairdressers | 220 |
| <b>EYELASH COLORING</b>   | Hairdressers | 120 |
| <b>EYEBROW CORRECTION</b> | Hairdressers | 280 |



TSUNAMI SPA, massages, masks and concentrates are used to prevent hair loss and improve the nutrition of hair follicles.

\* Price does not include cosmetics.

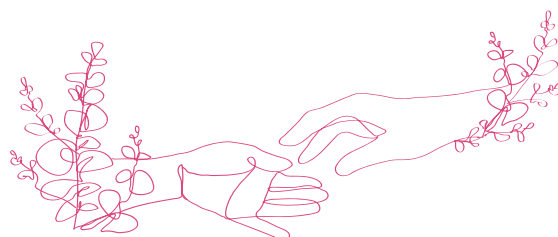
\*Cosmetics are chosen individually according to the condition and length of the hair.

## MANICURE

|                                 |      |    |         |
|---------------------------------|------|----|---------|
| <b>CLASSIC (MALE / FEMALE)</b>  | East | 60 | 550/500 |
| <b>HARDWARE (MALE / FEMALE)</b> | East | 60 | 650/600 |

## COATING

|                                     |      |    |     |
|-------------------------------------|------|----|-----|
| <b>GEL COATING "FRENCH"</b>         | East | 60 | 390 |
| <b>GEL COATING</b>                  | East | 60 | 400 |
| <b>NAIL POLISH COATING</b>          | East | 30 | 140 |
| <b>"FRENCH" NAIL POLISH COATING</b> | East | 30 | 140 |
| <b>POLISHING OF NAILS</b>           | East | 15 | 70  |
| <b>COATING REMOVAL</b>              | East | 10 | 40  |
| <b>GEL COATING REMOVAL</b>          | East | 15 | 110 |
| <b>"LUXIO" GEL COATING</b>          | East | 60 | 550 |



## PEDICURE

Time\min and price\UAH

|                                 |      |    |         |
|---------------------------------|------|----|---------|
| <b>CLASSIC (MALE / FEMALE)</b>  | East | 40 | 750/700 |
| <b>HARDWARE (MALE / FEMALE)</b> | East | 60 | 850/800 |

## HEALING PROCEDURES

|                                |      |    |     |
|--------------------------------|------|----|-----|
| <b>FOOT CLEANING</b>           | East | 10 | 350 |
| <b>REMOVAL OF ININGO NAILS</b> | East | 10 | 170 |
| <b>NAILS CORRECTION</b>        | East | 10 | 140 |

